



**C R E A T E**

KEEPING THE GO IN CHICAGO

**GS11**

# Columbus Ave. & Belt Railway Company Grade Separation

## Location

Columbus Avenue at Maplewood Avenue (west of the Columbus Avenue/Western Avenue intersection)  
Chicago, IL

## Daily Trains Affected

32 freight trains

## *Scope of Work*

This project will consider eliminating the at-grade crossing of Columbus Avenue by three Belt Railway Company of Chicago (BRC) tracks. This will be accomplished by creating either an overpass or underpass for vehicles using Columbus Avenue at this location.

## *Benefits*

This project will reduce roadway congestion and improve safety at this location. Daily, 11,500 vehicles pass through the crossing. The grade crossing separation will eliminate delay to nearly 1,700 vehicles daily, resulting in alleviation of more than 36,800 annual motorist hours of delay. It will also eliminate the potential for collisions between vehicles and trains.

This location is designated a "911 Critical Crossing," which means it is a critical location for emergency services to access communities with a high frequency of train movements or delays. The grade separation will eliminate this issue.

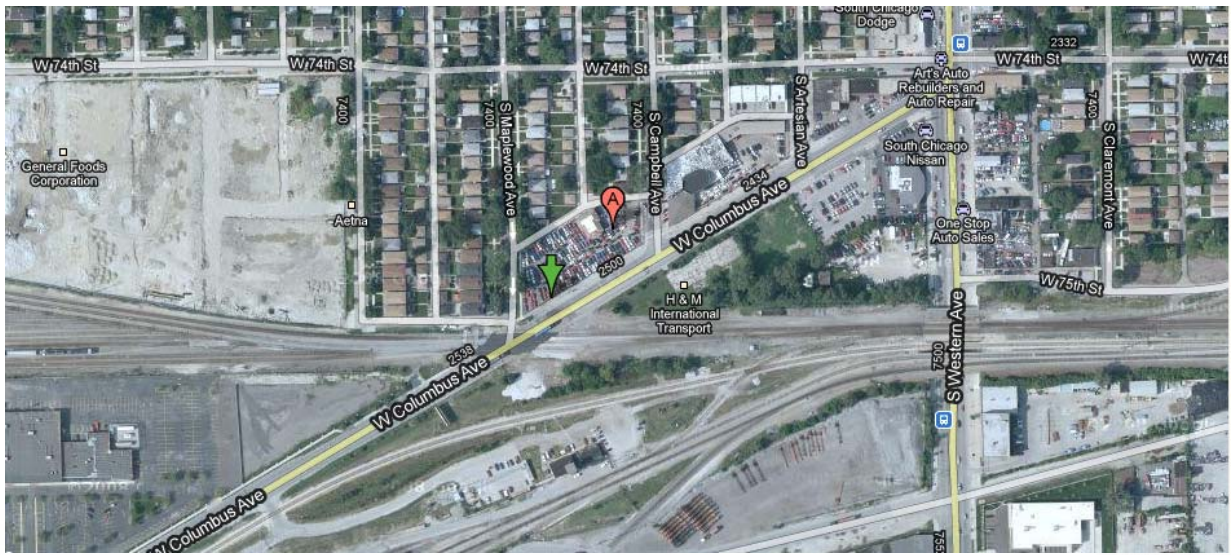
### **Communities Benefited:**

- Chicago – Ashburn Community Area

## Project Status

|  |                        |                          |
|--|------------------------|--------------------------|
| Phase I – NEPA – Preliminary Design (30% Design) | Phase II – Final PS&E* | Phase III - Construction |
| Underway   |                        |                          |

## Project Location Map



Existing Condition