



CREATE

KEEPING THE GO IN CHICAGO

GS24

Maple Avenue & BNSF Grade Separation

Location

Maple Avenue from Ogden Avenue to
Sheridan Avenue
Brookfield, IL

Daily Trains Affected

40 freight trains
94 Metra trains
6 Amtrak trains

Scope of Work

The project will consider eliminating the at-grade crossing of Maple Avenue and four BNSF tracks. Metra and Amtrak also operate commuter and intercity rail service over these tracks. This will be accomplished by creating either an overpass or underpass for vehicles at this location.

Benefits

Daily, 10,100 vehicles and 70 Pace buses (#331) pass through the crossing. This project will reduce roadway congestion and improve safety at this location. The grade crossing separation will eliminate delay to approximately 2,200 vehicles daily, resulting in alleviation of over 16,000 annual motorist hours of delay. Since freight switching moves pass over this crossing, these delays can be significant for motorists. It will also eliminate the potential for collisions between vehicles and trains.

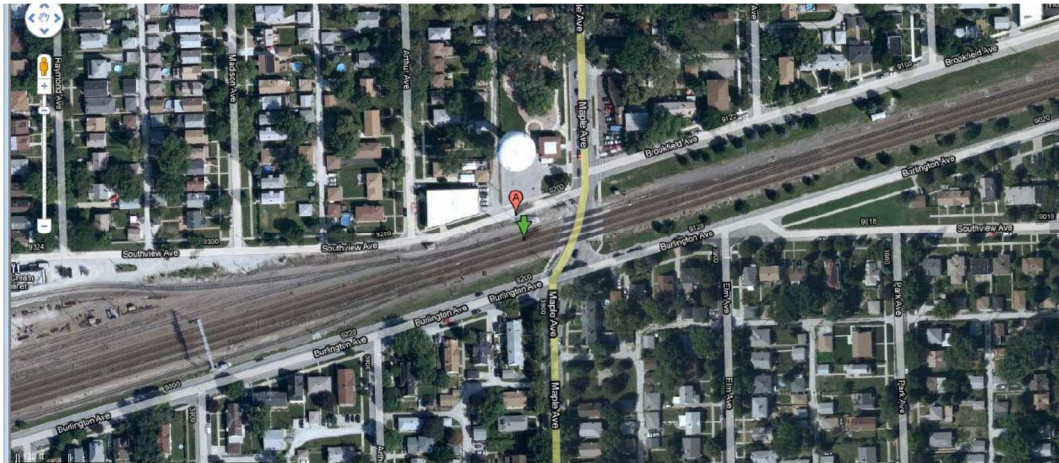
Communities Benefited:

- Brookfield, IL

Project Status

Phase I – NEPA – Preliminary Design (30% Design)	Phase II – Final Plans, Specifications & Estimates	Phase III - Construction
Pending Funding Availability		

Project Location Map



Existing Condition