



C R E A T E

KEEPING THE GO IN CHICAGO

GS4

Central Avenue & Indiana Harbor Belt Grade Separation

Location

Central Avenue
Chicago Ridge, IL

Daily Trains Affected

80 freight trains

Scope of Work

The project will consider eliminating the at-grade crossing of Central Avenue at the two IHB tracks. This will be accomplished by creating either an overpass or underpass for vehicles at this location.

Benefits

Daily, 19,400 vehicles pass through this crossing. This project will reduce roadway congestion and improve safety at this location. The grade crossing separation will eliminate delay to nearly 2,450 vehicles daily, resulting in alleviation of almost 18,700 annual motorist hours of delay. It will also eliminate the potential for collisions between vehicles and trains.

Communities Benefited:

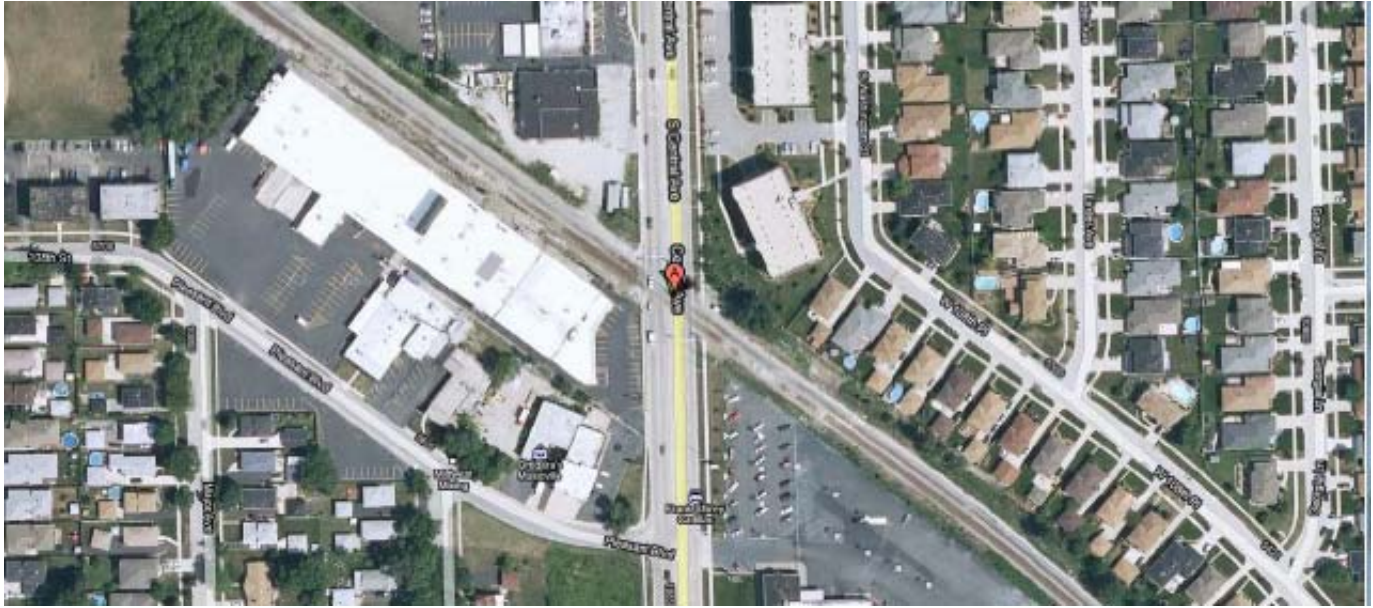
- Chicago Ridge and Oak Lawn, IL

Project Status

Phase I – NEPA – Preliminary Design (30% Design)	Phase II – Final Project Specifications and Estimates	Phase III - Construction
Pending Funding Availability		



Project Location Map



Existing Conditions

6/2018

WARNING
\$250-\$500 FINE FOR ANY
MOTORIST OR PEDESTRIAN