



CREATE

KEEPING THE GO IN CHICAGO

WA7

Brighton Park Connection

Location

California Avenue and 37th Place to 21st Street and Western Avenue

Chicago, IL

Daily Trains Affected

10 freight trains

Scope of Work

Construct new connection from the CN Joliet Subdivision near California Ave. and Archer Ave. to the CREATE Western Avenue Corridor. Also includes construction of an additional track along the Western Avenue Corridor to the 22nd St. Interlocking near 21st Street and Western Avenue. Rehabilitate multiple bridges over city streets and over the Chicago Sanitary and Ship Canal. Install crossover switches between the new track and the CREATE Western Avenue Corridor. Install Centralized Traffic Control signalization over the length of the project.

Benefits

This new connection between the CN Joliet Subdivision and the CREATE Western Avenue Corridor will provide a new east-west route allowing greater flexibility for dispatchers to route trains through the Chicago Terminal. Traffic traveling north from locations such as intermodal facilities in Joliet will be able to proceed more directly to intermodal yards in the city, increasing the potential for steel-wheel interchanges of trains and cargo versus transporting containers via truck using local streets and highways.

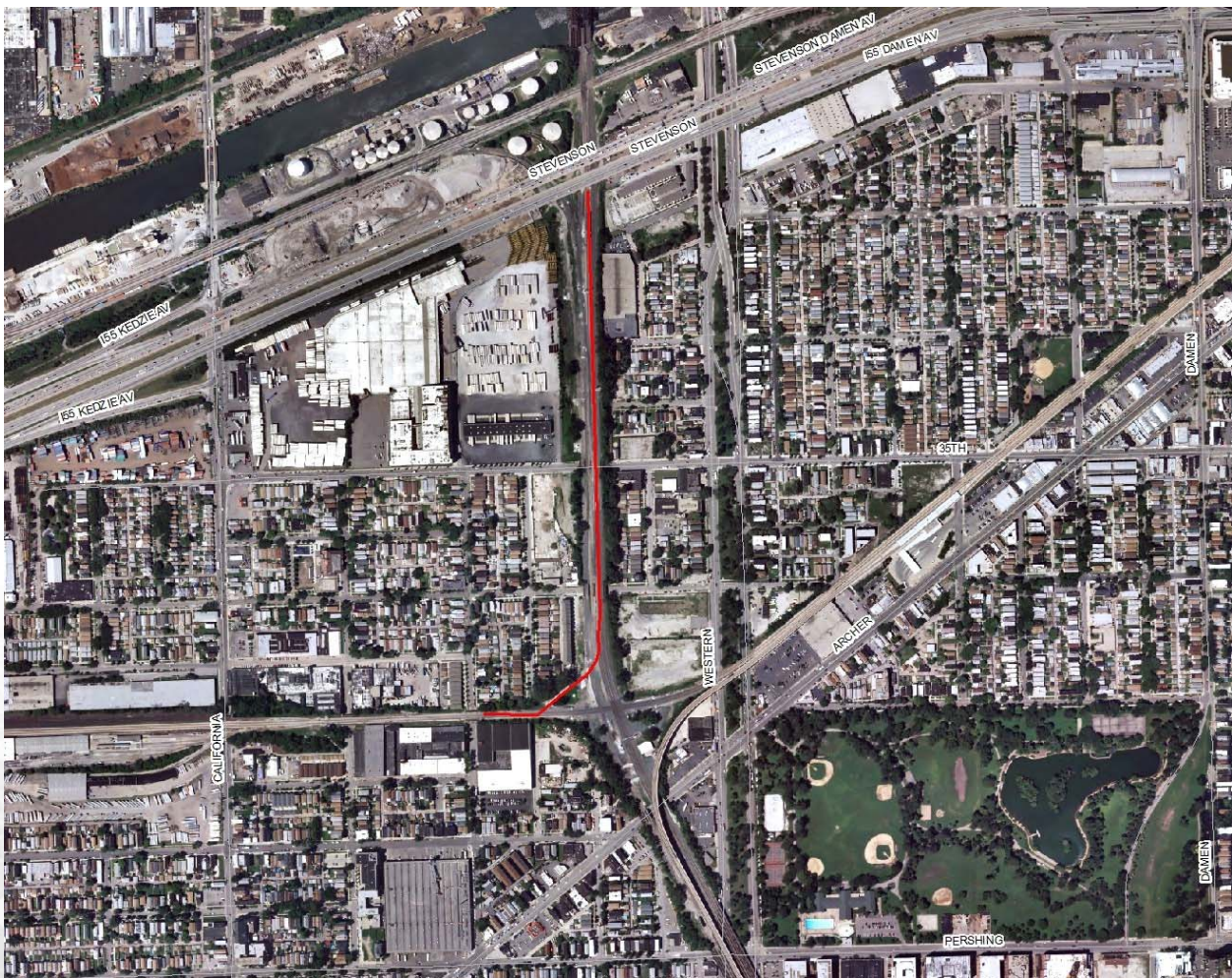
Communities Benefited:

- Chicago Community Area: Douglas Park, South Lawndale, Little Village, and Brighton Park

Project Status

Phase I – NEPA – Preliminary Design (30% Design)	Phase II – Final PS&E*	Phase III - Construction
Underway		

Project Location Map



TRACKS

WARNING
\$250-\$500 FINE FOR ANY
MOTORIST OR PEDESTRIAN